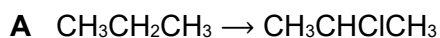
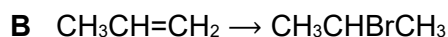
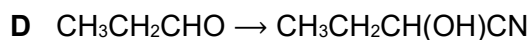


Q1.

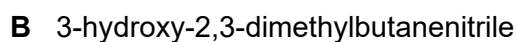
In which conversion does a nucleophile attack the organic reactant?

☐☐☐☐

(Total 1 mark)

Q2.

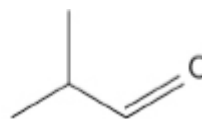
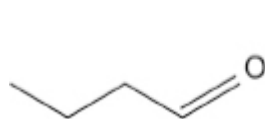
What is the product when 3-methylbutan-2-one reacts with acidified KCN?

☐☐☐☐

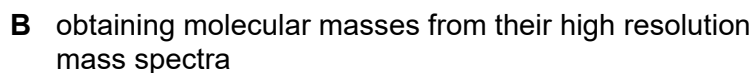
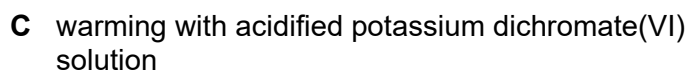
(Total 1 mark)

Q3.

The skeletal formulas of two compounds are shown.



Which method would distinguish between samples of these compounds?

☐☐☐☐

(Total 1 mark)